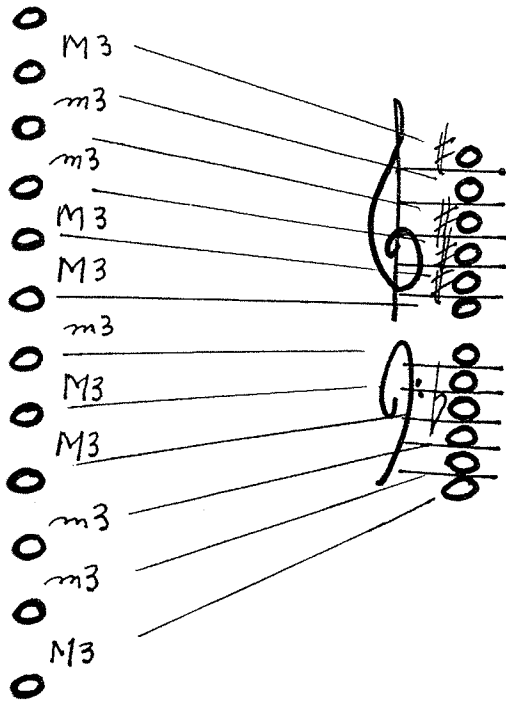


Color Code - chromatic canon

for a good-size group
minimum 12 - obviously.

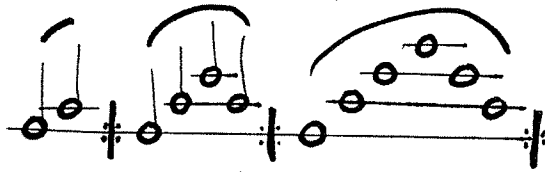


these specific pitches
given for convenience
any useful transposition
should be used

Each part need only use as many notes
as fall in a comfortable register

Then the notes start dropping out
from the bottom
until it ends on the canon of the top two.

Presentation of the tones



and
so
on
up

coordinate canonically

(rhythmic complications may be brought in)

All the notes are to remain in play
until the top-most is reached.

for Larry